



HAL
open science

Towards explicit consideration of time in cognitive engineering workbenches for intelligent assistance system design

Christophe Kolski, Michèle Duribreux

► **To cite this version:**

Christophe Kolski, Michèle Duribreux. Towards explicit consideration of time in cognitive engineering workbenches for intelligent assistance system design. *International Journal of Industrial Ergonomics*, Elsevier, 1993, 11 (2), pp.125-134. 10.1016/0169-8141(93)90006-Y . hal-03331705

HAL Id: hal-03331705

<https://hal-uphf.archives-ouvertes.fr/hal-03331705>

Submitted on 8 Jul 2022

HAL is a multi-disciplinary open access archive for the deposit and dissemination of scientific research documents, whether they are published or not. The documents may come from teaching and research institutions in France or abroad, or from public or private research centers.

L'archive ouverte pluridisciplinaire **HAL**, est destinée au dépôt et à la diffusion de documents scientifiques de niveau recherche, publiés ou non, émanant des établissements d'enseignement et de recherche français ou étrangers, des laboratoires publics ou privés.

TOWARDS EXPLICIT CONSIDERATION OF TIME IN COGNITIVE ENGINEERING WORKBENCHES FOR "INTELLIGENT" ASSISTANCE SYSTEM DESIGN*

Christophe KOLSKI, Michèle DURIBREUX

Laboratoire d'Automatique Industrielle et Humaine
URA CNRS 1118 - B.P. 311
Université de Valenciennes et du Hainaut Cambrésis
59304 Valenciennes Cedex, France
Phone 27 14 12 34 Fax 27 14 12 94 Telex 810270F

* Part of this paper was presented at the Annual Industrial Ergonomics and Safety Conference, Denver, Colorado, 10-14 June 1992 (Kolski and Duribreux, 1992).

ABSTRACT

The problematic issues of the knowledge and temporal strategies used by the human operator in the control rooms of complex industrial process are studied. This includes the different tools and the current knowledge engineering workbenches which ease the knowledge acquisition, structuralization and formalization for the ergonomist and the knowledge engineer. Especially emphasized will be certain temporal tools available in Artificial Intelligence which can contribute to the development of knowledge engineering workbench considering explicitly the time. Finally, a pluridisciplinary research approach is proposed.

RELEVANCE TO INDUSTRY

Field studies show that there exist many poorly adapted "intelligent" assistance systems in the controls rooms of complex industrial processes. One reason is that to be really efficient, these tools particularly have to consider the use of time in the different human tasks. The development of better knowledge engineering workbenches explicitly utilizing the time is crucial. This paper proposes such a contribution in this field.

KEYWORDS

Cognitive engineering workbench, time, process control, assistance system design, pluridisciplinarity

INTRODUCTION

As a consequence of technological development, the human operator of the industrial process control room is becoming less and less involved in manual control tasks, while at the same time, realizing ever more complex cognitive tasks to solve problems (Rasmussen, 1986; Moray 1986). In complex processes, the tendency has been to assist the operator by "assistance systems" (see for instance the works of Helander, 1988; Millot, 1988; Boy, 1988; 1990; Tendjaoui et al., 1991 ; Kolski et al., 1992, and so on). These new systems can be based -or not- on Artificial Intelligence approach, such as expert systems. To be really efficient, it is important that these tools consider how the operators use time in their different tasks. However, the acquisition, the structuralization and the formalization of knowledge and temporal strategies obviously pose a problem which has not been yet solved. The ergonomist and the knowledge engineer themselves have especially been lacking in this respect, although, at the present time, cognitive engineering workbenches are starting to appear. The main idea of the article is that, although, these workbenches are not really adapted to human tasks in the control room. Recent advances in temporal logics in Artificial Intelligence allow this approach to be possible.

The article consists of five main parts. After an initial description of assistance systems that can be found in control rooms of industrial processes, the problematic issues of knowledge and temporal strategies used by the human operator in such control rooms will be studied. The third part will discuss the different tools and the current knowledge engineering workbenches which ease the knowledge acquisition, structuralization and formalization for the ergonomist and the knowledge engineer, in spite of the lack of temporal aspects consideration. The fourth will emphasize certain

temporal tools available in Artificial Intelligence which can contribute to the development of knowledge engineering workbench utilizing time explicitly. Finally, a multidisciplinary approach is proposed.

CLASSIFICATION OF ASSISTANCE TOOLS IN INDUSTRIAL CONTROL ROOMS

Presently, the human operator in industrial process control rooms can be assisted in problem solving tasks by systems which are generally based on Artificial Intelligence techniques.

These complementary tools can be classified according to their functionalities during the problem solving step, as defined by Rasmussen (1980), used by a human operator in case of an abnormal situation. This step can be split up into several sequential stages : In case of alarm or of abnormal event detection, the operator observes information in order to identify the process state. Therefore, he uses predictions, evaluations and alternatives to define a general strategy. Then, he defines tasks and chooses some adequate improvements in the process. He has therefore to define the action procedures, to act on the process, and finally to keep up with the effects of the corrective actions.

Figure 1, modified from Taborin (1989), classifies assistance tools for each of these stages. Note that the operator, facing familiar or preplanned situations, is not obliged to perform the complete process of problem solving.

- Class 0 : This class has no assistance system and therefore operator is not assisted. In case of dysfunctioning, the system just raises the alarms.
- Class 1 : This class consists of filtering alarms systems. In case of a defect, these systems present the most significant alarms of the ordinary state of the process. The sub-alarms are eliminated, because they are not the direct consequence of the defect. The integration of these systems furthers a preventive behavior and bases the observation and diagnosis stages on significant variables. Such systems are described by Andow (1980) and Lees (1983).
- Class 2 : The second class groups together systems that search and synthesize significant information, i.e. selecting that information which is most indicative of the process functioning state. The operator must consider this information not only during the supervision tasks, but also during the problem solving ones. Furthermore, when useful information is not available, the system must be able to supply information issued from upper levels, for instance variables in relation with chemical reactions. These principles have been studied by Goodstein (1981), Rouse et al. (1982) and Gambiez et al. (1991) for instance.
- Class 3 : The third class groups the diagnosis aid systems able to locate defects and to define their causes, from the set of available information. Contrary to the class 1 systems, they do not provide any help concerning the fault detection. Generally, the reasoning period is too long to alert the operator quickly enough to the emergence of a problem and a diagnosis result. On the other hand, they provide him with interactive help for reasoning and evaluation of the situation, by presenting high level information on the process state. To this effect, they must satisfy a additional constraint, the capacity to justify their results. The HORSES system, developed by Boy (1986) fits this class. Its originality consists in a knowledge base constituted by three levels : the first one permits a fast situation recognition, the second one analyses this situation and makes a diagnosis, the third and last level - called metaknowledge - controls the other levels. The advantage of this decomposition is to allow an adaptation of reasoning to the situation.

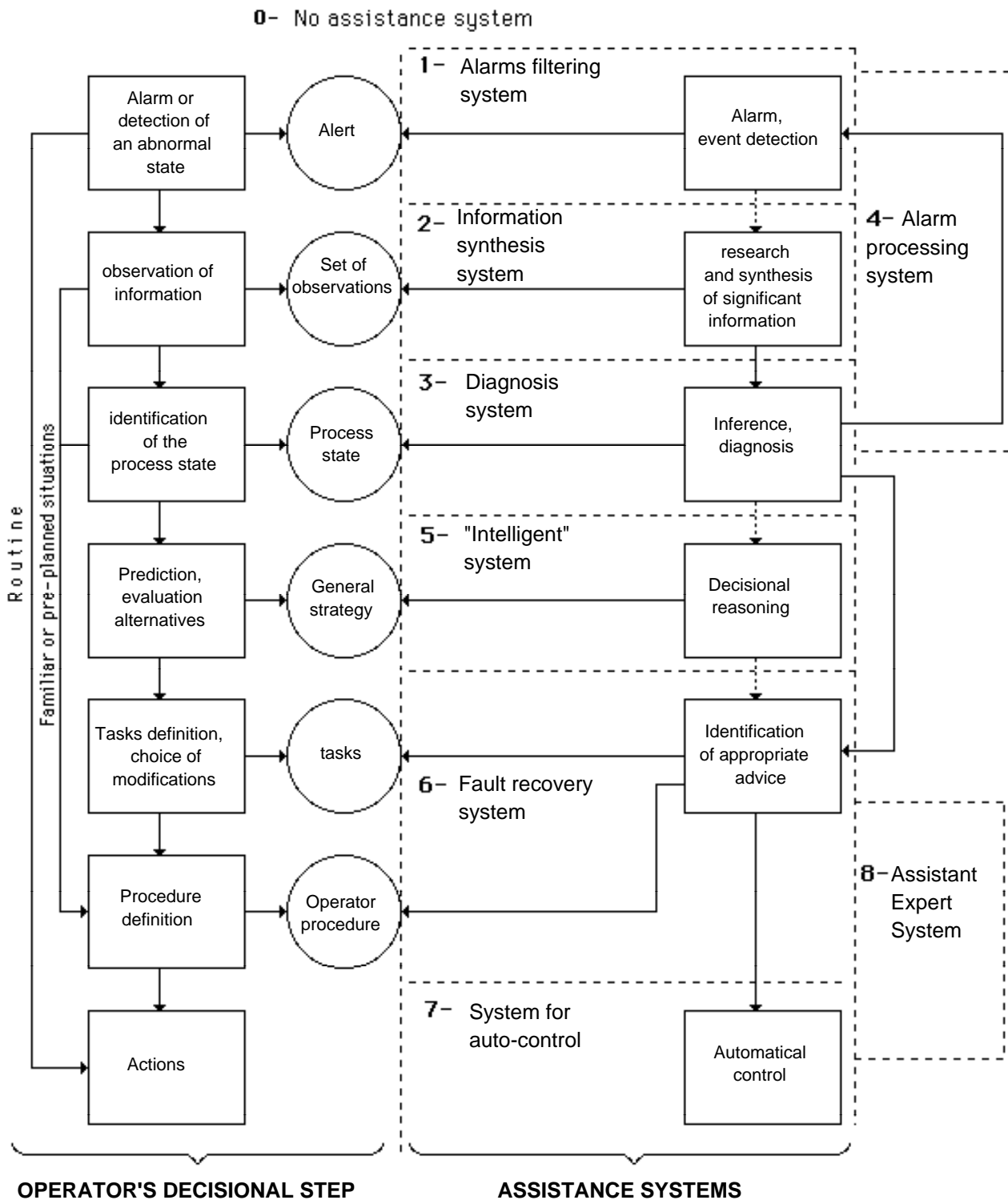


Figure 1 : Classification of assistance systems (from Taborin, 1989)

Class 4 : This class groups the systems by alarms treatment. Their function consists in alerting the operator when a defect appears. They do not limit the selection to the most significant alarms - like in the class 1 -, but are able to make a first analysis of the situation in order to quickly present a set of information, especially concerning the state of the different sub-systems which are implicated in the perturbation. This first diagnosis is less complete than a diagnosis which could be provided by a class 3 system, but it helps the operator during his problem solving step, by presenting him a set of information to be considered. The interface design is very important, because the help provided by these systems covers a large part of the human problem solving step. Their main interest consists in limiting errors made during the situation evaluation. An example of such a system is described by Ancelin and Legaud (1986).

- Class 5 : In this class, a system has to : (i) estimate the reactions of the process consequent to the actions, (ii) predict the future state of the process, (iii) formulate hypotheses, and finally (iv) make decisions. In other words, it has to reason like a human, adopting a knowledge-based behaviour. But such truly intelligent and extremely complex reasoning has not yet been modelled in spite of the very active research in this field. Artificial Intelligence contributions to the design of such systems particularly include : the deep reasoning, the planning, the reasoning by analogy, the temporal logic, and the qualitative physics. The system PREDEX (Tang and Schoellkopf, 1990) provides several functionalities of the tools from this class.
- Class 6 : The systems of this class aid at a recovery. Unlike those of class 5, the knowledge of these systems corresponds to the one used by a well trained human operator, who adopts a procedural behaviour. These tools propose a diagnosis and suggest a procedure to correct the defect. So, they provide the operator with a great quantity of different information on several levels : significant information, diagnosis, corrective actions, etc. The problem is the choice and manner of presenting the information. These systems allow the operator to check, before acting on the process, if the defined procedure is the same that the one proposed by the assistance system. This condition limits the errors made during the evaluation of the situation, in particular (i) those related to the procedures, (ii) the errors due to the planning and correction. Several tools of this class, such as ESCORT (Paterson et al., 1985), PREDEX (Tang and Schoellkopf, 1990) or DIAPASON (Coudouneau et al., 1990), make deep and/or shallow diagnoses and propose advice so as to correct the situation.
- Class 7 : In this class, the intelligent systems automatically control the process. These are class 6 systems which perform actions based on reasoning. One such system, ARTIFACT, is based on a relational model linking the different sub-systems of the process (Francis and Leith, 1985). It deduces "conditions/actions" rules from which a planning module analyses the best set of possible actions to reach the wanted state. Nevertheless, such a system does not take into account time in its reasoning process. Therefore, it can only be applied to processes whose inference duration is slow enough to be considered as static. ARTIFACT has only been applied on very simple processes. It is not yet possible to let to such a system completely control complex processes because it still must integrate the knowledge related to all the possible situations. Few systems exist in this class.
- Class 8 : In this class, a system assists the operator when requested (Mandiau et al., 91). Using knowledge about (i) the tasks to be performed and (ii) data issued from the process, this system permanently generates action plans. These plans can either be used by the operator, or be applied directly by the system on the process at the operator request. These systems are called "Operator assistant systems" (Boy, 1988) or "Assistant Expert Systems". They use certain functions of class 6 systems, providing the operator with recovery assistance, and acting directly on predefined processes.

The implementation of each of these systems leads to problems related to (i) the dynamics and the complexity of the process to control and (ii) the objectives of the computing assistance. Indeed, these systems exploit heterogeneous and complex knowledge geographically distributed in the installations. Furthermore, these systems require functions dependent on the operator problem solving state. Field studies of control rooms show the existence of many poorly adapted "intelligent" assistance systems. One reason for their efficiency is that these tools do not consider how operators used time in their different tasks.

TEMPORAL KNOWLEDGE AND STRATEGIES OF THE HUMAN OPERATOR IN A CONTROL ROOM

Temporal problems have been studied for many years in psychology (see the works of Piaget, 1946 and Fraisse, 1957 quoted by Decortis, 1988). The temporal dimension of human operator activities in complex industrial process control rooms, have been researched in work psychology for only about ten years. But a better understanding of the intervention of the time in the human operator's reasoning and knowledge and the specification of future assistance tools have already been identified (see De Keyser et al., 1987; Dorner, 1988; Decortis, 1988; Grosjean and Javaux, 1991 or De Keyser, 1990; 1991).

For example, in a continuous steel casting control room (De Keyser et al., 1987) direct actions given to the operator are weak, but, on the other hand, the control room can change into a "dispatch" room. In addition to the supervision of process and actions in the form of orders which modulates the actions of other workers, the operator manages and co-ordinates all the activities surrounding the casting machine. Because of information exchanges with the staff, he detects or collects the technical failures, works out a pre-diagnosis and appeals to the department concerned, in addition to other administrative tasks. The operator must therefore be in interaction with many other workers. According to field studies, operators communicate verbally : dated or undated facts, numerical data, tendencies, estimations related to a chronology of actions, qualitative valuations, judgments, references to the past, reactions to certain operator's decisions. These different types of verbal communications are used for support of information and to make the estimation, the judgment and the diagnosis easier in some situations. They are used as a

collective memory which can be refreshed by the operator and from which information can be drawn. They include different notions of time.

Many other studies show the cognitive wealth of the human operator's work. For example, in his study about the temporal dimension of operators cognitive activity in a start up of a thermal power station, Decortis (1988) emphasizes the temporal aspects of operator, such as : (1) estimation of process state durations according to the content of events, temporal limits and variation speeds, (2) temporally reasoning on interdependent process elements, (3) estimation on the duration of the action and annex events, and on intervention time, (4) optimal management of simultaneous actions, (5) synchronization of collective actions of different intervening parties, (6) reduction of time for events in order to make up delays, (6) watching the evolution of events before intervening at the right time, (7) adaptation and development of chronological, sequential and simultaneous strategies, according to the situation of the process running.

With regard to such temporal aspects, De Keyser (1990) discussed the difficulties that the operator faces when evaluating, integrating, coordinating or planning the machine system, and the errors which can be associated with these situations.

Thus, the importance of the real needs concerning the human operator's assistance in control rooms is shown. In the development process of assistance tools in complex systems, computerized tools, particularly for acquiring and formalizing the knowledge are used. But these tools are yet not really adapted to the temporal problems of assistance. The following paragraph deals with one such study.

REVIEW OF THE METHODOLOGIES AND TOOLS FOR KNOWLEDGE ACQUISITION IN RELATION TO THE DEVELOPMENT OF ASSISTANCE TOOLS

Whatever the application, current approaches to knowledge acquisition can be based on a large variety of methods, techniques and tools, most of them imported from other sciences (psychology, linguistics, epistemology, software engineering, artificial intelligence...) and adapted for computerization.

The principle of a knowledge engineering workbench consists of a wide range of tools whose purpose is to support the knowledge engineer, in cooperation with an expert, in core knowledge engineering activities. Figure 2 shows a general architecture of the different functions of such a workbench. With an elicitation toolkit box, the expert's knowledge can be acquired in relation to a pre-existing model, which is including in a library of generic models, characterized at structural, functional and conceptual levels. Finally, a translator module uses a transcription of the high level model into lower level form (objects, rules...) directly executable via an inference engine integrated in the assistance system.

Many elicitation tools, which are specific to one or several acquisition techniques, currently exist. For example : ETS (Boose, 1985) based on repertory grids techniques, MACAO (Aussenac, 1989) based on protocol analysis, ROGET (Bennet, 1985) and MORE (Kahn, 1985) based on interviewing techniques. Other such tools specific for a given task are described by Boose (1989). However, none of them explicitly represents the notion of time.

Current research is trying to combine knowledge acquisition techniques in a toolbox form, e.g. AQUINAS, a knowledge acquisition workbench including repertory grid, interviewing and scaling techniques (Boose, 1989). The Esprit project ACKnowledge is studying the integration of machine learning and the techniques and tools for knowledge acquisition, to result in a coherent computing environment called KEW (Knowledge Engineering Workbench). The workbench associates techniques for knowledge collection (card sorting, repertory and scaling grids) and machine learning techniques (e.g. generalization). The selection of these techniques depends on the type of knowledge and the way the knowledge is represented. At some point in the process, the elements of knowledge are included and the quality of the knowledge base is evaluated in order to establish what should be complemented, refined or made coherent (Julien, 1991). In comparison with the various temporal strategies brought into operation by a human operator in a control room of complex systems, these workbenches seem to be insufficient in spite of the variety of techniques that they offer to the designers.

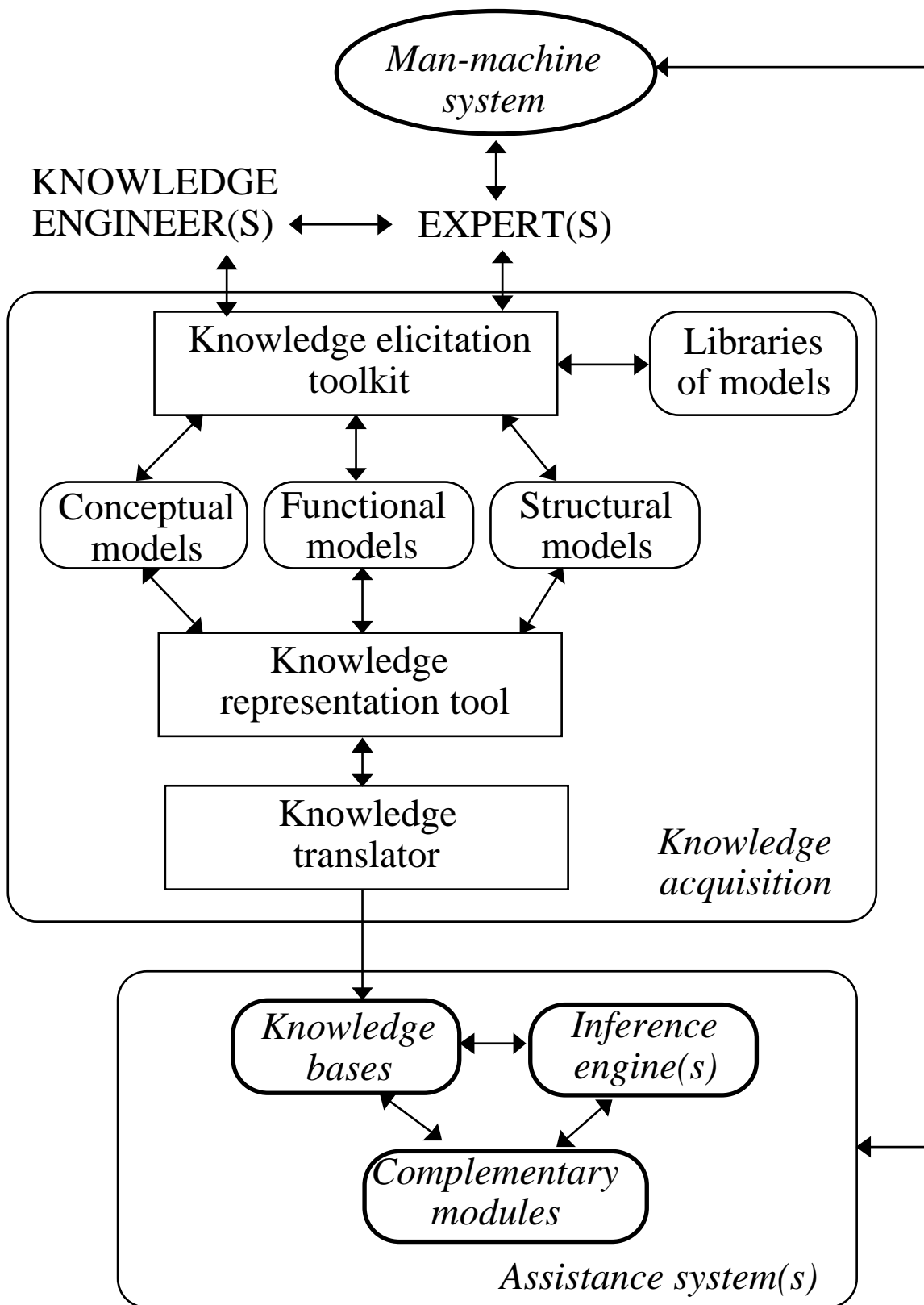


Figure 2 : Global principle of current computerized tools for knowledge acquisition

The first knowledge acquisition methods, associated with the life cycle of a knowledge-based system, were often based on the rapid prototyping. A prototype was first of all developed and then refined until the final knowledge-based system was obtained. This incremental approach has led the development of many knowledge-based system methodologies (Hayes-Roth et al., 1983, Nassiet, 1987, Benkirane et al., 1991). This process, also called structured acquisition of knowledge (Johnson, 1988) enables the collection of the knowledge and the development of field models. Extension of other scientific methods have resulted in the development of very formalized and powerful

methodologies, such as KADS and KOD which are briefly described below. Such methodologies seem to be particularly attractive to the present research.

The KADS methodology, originating from epistemology, guides the knowledge based system development from the organization of the domain to the development of the whole system. Based essentially on the construction of several models, it breaks the domain organization into stages where the problem is decomposed into component parts and the analysis of knowledge is separated from its machine implementation. KADS has three modelling levels : (1) a language to describe the conceptual model, constituting an intermediate representation between the expert's data and the design/implementation of the knowledge based system ; (2) a design module describing the representation of the conceptual model to the external needs using an appropriate framework, and (3) a module of modalities to specify the co-operation and the communication between the knowledge based system and the user. The success of KADS has been represented by the marketing of a tool called OPEN KADS. The workbench has proved itself in large applications such as the SACHEM (Système d'Aide à la Conduite des Hauts fourneaux En Marche) project developed for SOLLAC. This project developed an intelligent system based on expert knowledge to supervise metallurgy blast furnaces. The KADS methodology does not explicitly mention temporal management, although it should be possible to take into account temporal constraints of a process, as is presently being done by the designers of KADS.

The KOD methodology (Knowledge Oriented Design) concerns the acquisition of an expert's knowledges (but only by interviewing techniques), their modelling based on the retranscription of the verbalizations, and finally a specification of the knowledge base according to a multiple step analysis of the verbal data. Also based on a knowledge modelling, the KOD methodology offers a cognitive model which is used as an intermediary between the natural language of the expert (practical model) and the computer language in which the knowledge based system will be implemented (computing model). On the cognitive level, the expert uses "taxonomies", "actinomyes" and schemes of interpretation and reasoning (Vogel, 1988). From this data acquired from the verbalizations of the expert, the practical mode allows to obtain a specification of the expertise, which states precisely the field and the phases of setting up the expertise. The practical model is leading the collect of data in order to make the future knowledge structuralization easier. Then, the collected data is reduced in order to recognize the manipulated units in the expert's speech (cognitive model). KOD is now called K-Station which is available on the market. The time notion is not explicitly considered in the K-Station. However, this notion is explicitly mentioned by Vogel when he deals with the "actinomy" by decomposing it in elementary sequences, which are combined in order to produce complex sequences. Vogel suggests that Allen's model (see the next paragraph) enables to calculate the temporal relations between the events.

Despite promises of explicitly taking time into account, most assistance systems for human operators in the control rooms of industrial complex systems have not done so. Even if knowledge acquisition utilizes resources from different fields, the temporal tools of artificial intelligence are not utilized. Nevertheless, in the following paragraph, different temporal tools can be used to deal with problems related to dynamic complex processes.

THE POTENTIAL CONTRIBUTION OF TEMPORAL TOOLS IN RELATION TO KNOWLEDGE ACQUISITION AND MODELLING

In artificial intelligence, logical formalisms and tools for the explicit management of time can be used to solve problems (Bestougeff and Ligozat, 1989). But, for any application, the most primitive adequate temporal entities should be chosen. Systems based on "points" are used the most, because they are easy to model. In fact, a representation based on punctual entities does not naturally represent the notion of duration. The need for extensive entities has led to different definitions of interval : sub-sets of points or pairs of points for instance (Libert et al., 1990). Similarly, the relationship between these entities is important. To represent time, the notion of precedence is fundamental. This relationship can be expressed as : "has begun strictly after/before", "has started simultaneously at", "just before/after", and so on. When there are temporal intervals, the insertion between two time intervals is natural. Finally, the properties of the relationship between the temporal entities must be satisfied. Discrete modelling can be used, for others applications, a continuous point of view is necessary.

In artificial intelligence, the basic time models are those of Allen (1984) and McDermott (1982). These models have been at the origin of many studies, extensions and realizations leading to deduction systems. For example, based on the temporal model of Allen, the NEMO inference engine is used for the development of real-time knowledge-based systems (Tang, 1990 ; Gambiez et al., 1991).

According to Allen (1984), time is an abstract notion which only exists with regard to the evolution of the universe, and is perceptible only due to environment changes. The practical representation of time is therefore linked to the evolution of the environment, i.e. to the concepts of event, state, situation, succession of states and so on. This model is essentially based on time intervals. A set of thirteen basic binary relations describes all the possible ways two intervals can be related to each other. Three entities are then taken into consideration : the properties about intervals, the events and the processes during an interval.

According to McDermott (1982), the time can be considered in a continuous manner and basic entities of the model are a set S of states a set T of instants. This model represents the world state as a photograph of the world at a fixed time, and defines temporal points as elementary entities for the representation of time. Some facts are identified with subsets of the set of states. In this model, an event can have a duration, corresponding with a succession of states in which the event happens only once in time, and is missing in states near this succession. McDermott also introduced notions manipulating basic entities.

In spite of their limits, the McDermott and Allen's models have introduced a basic formalism, which is used as a reference for different models for an efficient management of the temporal relations (Ghallab and Alaoui, 1989; Ermine and Cauhapé, 1990).

Each of the temporal approaches contribute to time modelling in knowledge engineering workbenches and are used by the designers in developing assistance tools for operators in complex systems. Meanwhile, two crucial problems appear : (i) the specialists in temporal logics are not conscious of the real assistance needed in control rooms, while (ii) human factors specialists are not really knowledgeable concerning the study and development of knowledge engineering workbenches for assistance systems design in complex processes. Thus, the integration of these temporal aspects requires a close collaboration between work psychologists, ergonomists, knowledge engineers, automatists and computer scientists.

CONCLUSION : NECESSITY OF A MULTIDISCIPLINARY APPROACH FOR THE EXPLICIT CONSIDERATION OF TIME IN COGNITIVE ENGINEERING WORKBENCHES

Because of automation of complex industrial processes, human operators in control rooms require assistance systems considering explicitly time. The development of such assistance systems requires the use of improved tools, to acquire, structuralize and formalize expert knowledges and strategies. These tools are presently being studied, developed or validated in industrial and university research laboratories.

However, to obtain the most efficient tools for incorporating temporal needs of the human operator, a multidisciplinary approach between work psychologists, ergonomists, knowledge engineers, automatists and computer scientists is necessary. Each of these has complementary knowledges concerning : (1) the real needs of the human operators in control rooms, (2) the tasks to be performed, (3) the characteristics of the man at work, (4) different technical, ergonomical and methodological aspects related with knowledge acquisition, structuralization and formalization, (5) techniques, tools and methods issued from artificial intelligence, and so on.

The figure 3 proposes a multidisciplinary approach in this field. With Work Psychology, Sociology and Ergonomics experts, it is possible to take a census of temporal needs and strategies in control rooms of complex processes. A collaboration with Cognitive Engineering experts can lead to a census of the current knowledge acquisition tools and their characteristics and fonctionnalités. With Artificial Intelligence experts, it is possible to take the census of temporal logics tools. With all three, it is then possible to study the adequacy of identified models, methods and techniques. This analysis must lead to (1) a better specification of cognitive engineering workbenches usable for the development of knowledge bases integrated in assistance system(s), and also (2) a better specification of specialized workbenches (for instance real-time expert system shells) for the development of inference engine(s) integrated in assistance system(s).

ACKNOWLEDGEMENT

The authors would like to thank Dr. Andris Freivalds for his improvement of the manuscript.

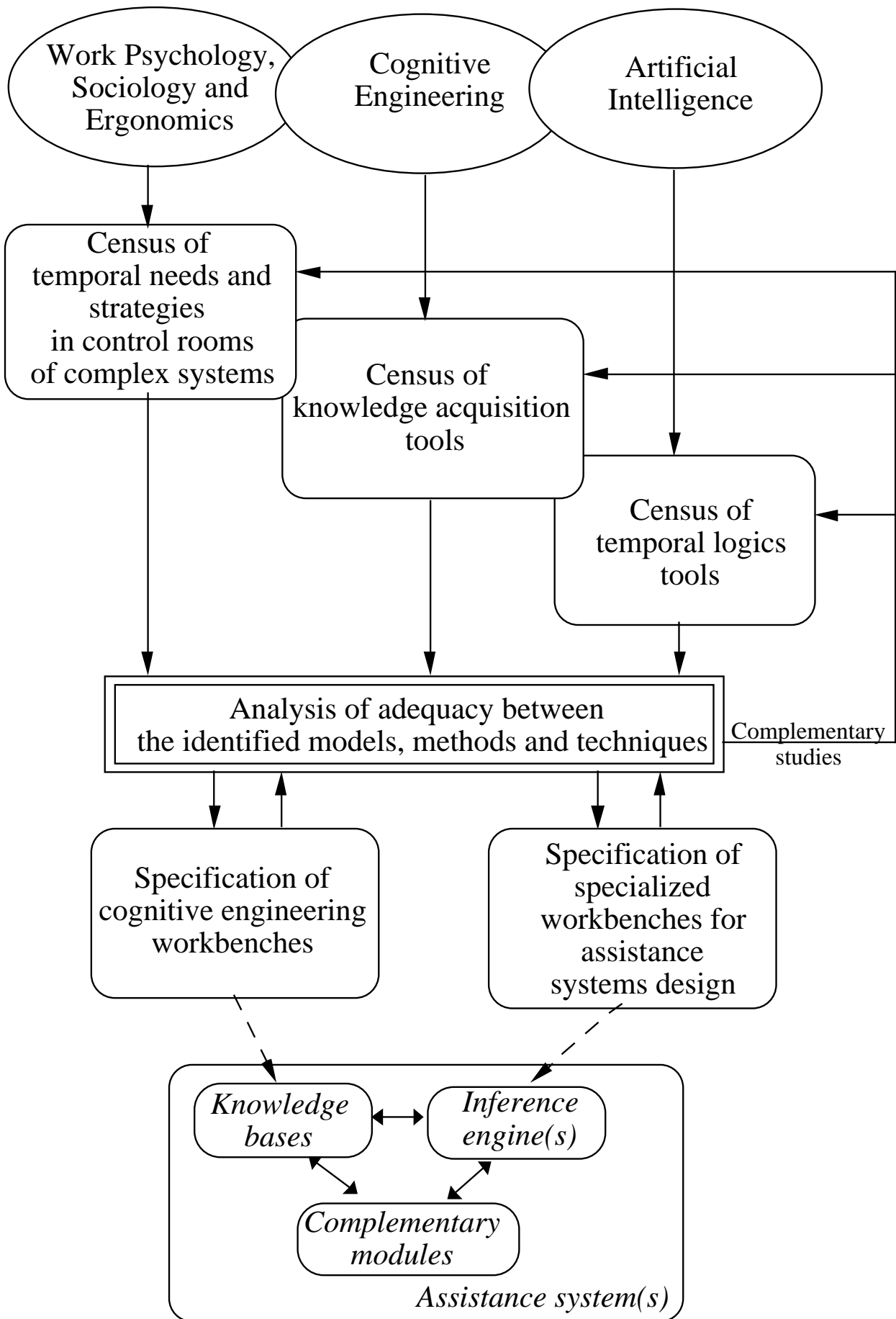


Figure 3 : Proposition of a multidisciplinary way of research

REFERENCES

- Allen, J.F., 1984. Towards a general theory of action and time. *Artificial intelligence*, 23, pp. 123-154.
- Ancelin, J. and Legaud, P., 1986. Un système expert pour le traitement des alarmes d'un réacteur nucléaire, in Proc. of the 6th international Conference : Expert System and Applications, Avignon.
- Andow, P.K., 1980. Real-time analysis of process plant alarms using a mini-computer, *Computers and Chemical Engineering*, vol. 4, pp. 143-155.
- Aussenac, N., 1989. Conception d'une méthodologie et d'un outil d'acquisition de connaissances expertes. Thèse de doctorat en informatique, university of Toulouse, October.
- Benkirane, M., Duribreux, M. and Houriez, B., 1991. Methodological knowledge elicitation approach. Application to the design and realization of a knowledge based system dedicated to the technical diagnosis. Proc. The 3th European Conference on Cognitive Science Approaches to Process Control, Cardiff, UK, September 2-6.
- Bennet, J.S., 1985. A knowledge-based system for acquiring the conceptual structure of a diagnostic expert system. *Journal of Automatic Reasoning*, 1, pp. 49-74.
- Bestougeff, H. and Ligozat, G., 1989. Outils logiques pour le traitement du temps. Masson, Paris.
- Boose, J.H., 1985. A Knowledge acquisition program for expert systems based on personal construct psychologie. *International Journal of Man-Machine Studies*, 23, pp. 495-525.
- Boose, J.H., 1989. A survey of knowledge acquisition techniques and tools. *Knowledge acquisition*, Vol. 1.
- Boy, G., 1986. an expert system for fault diagnosis in orbital refueling operations, 24th Aerospace Science Meeting AIAA'86, Reno, Nevada, January.
- Boy, G., 1988. Operator assistant systems. In: E. Hollnagel, G. Mancini, D.D. Woods (Eds.), *Cognitive Engineering in Complex Dynamic Worlds*.
- Boy, G., 1990. *Intelligent assistant systems*. Academic Press, London.
- Coudouneau, L., Leyval, L., Montmain, J. and Penalva, J.M., 1990. DIAPASON : un système d'aide à la supervision. Commissariat à l'Energie Atomique, CEN-Valrhô, BP 171 30205 cedex Bagnols/ceze, France.
- Decortis, F., 1988. Dimension temporelle de l'activité cognitive lors des démarrages de systèmes complexes. *Le Travail Humain*, 51 (2).
- De Keyser, V., 1990. Fiabilité humaine et gestion du temps dans les systèmes complexes. In: J. Leplat and G. De Terssac (Eds.), *Les facteurs humains de la fiabilité dans les systèmes complexes*, Editions Octares, Marseille.
- De Keyser, V., 1991. Temporal reasoning in continuous processes, segmentation and temporal reference systems. Proc. of the Third European Conference on Cognitive Science Approaches to Process Control, Cardiff, UK, September 2-6.
- De Keyser, V., Decortis, F., Housiaux, A. and Van Daele, A., 1987. Les communications homme-machine dans les systèmes complexes. Rapport politique scientifique FAST n°8, Editions de l'Université de Liège, Liège.
- Dorner, D., 1987. On the difficulties people have in dealing with complexity. In: J. Rasmussen and J. Leplat (eds.), *New Technology and Human Error*, Wiley and Sons, Chichester.
- Ermine, J.L. and Cauhapé, D., 1990. Raisonnement temporel dans les systèmes experts. *Revue d'intelligence artificielle*, 4, pp. 99-136.
- Fraisse, P., 1957. *Psychologie du temps*. Presses Universitaires de France, Paris.
- Francis, J.C. and Leith, R.R., 1985. ARTIFAC : a real-time shell for intelligent feedback control. In: Bromer H. A. (ed.), *Research and Development in Expert Systems*, pp. 151-162.
- Gambiez, F., Kolski, C., Tang, X. and Millot, P., 1991. Man-machine interface for PREDEX, an expert system shell for process control and supervision. In: M.G. Singh and L. Travé-Massuyès (Eds.), *Decision support systems and qualitative reasoning*, North-Holland, pp. 341-346.
- Ghallab, M. and Alaoui, A.M., 1989. Raisonnements temporels symboliques : représentations et algorithmes. *Revue d'intelligence artificielle*, 4, pp. 99-136.
- Goodstein, L.P., 1981. Discriminative display support for processus operators. In: J. Rasmussen and W.B. Rouse (Eds.), *Human detection of system failures*, Plenum Press.
- Grosjean, V. and Javaux, D., 1991. Elicitation of temporal reference systems. Proc. of the Tenth European Annual Conference on Human Decision Making and Manual Control, Liège, Belgium, November 11-13.
- Hayes-Roth, F., Waterman, D.A. and Lenat, D.B., 1983. *Building expert systems*. Addison-Wesley Publishing Company Inc., New-York.
- Helander, M. (Ed.), 1988. *Handbook of Human-Computer Interaction*. Elsevier Science Publishers B.V., North-Holland, Amsterdam.
- Hickman, F.R. et al., 1989. *Analysis for knowledge based systems : a practical guide to the KADS methodology*. Ellis Horwood, London.
- Johnson, N.E., 1988. Knowledge elicitation for second generation expert systems. Proc. 2nd European Workshop on Knowledge Acquisition for Knowledge Based Systems EKAW 88, Bonn, june.
- Jullien, C., 1991. Le projet ACKnowledge. *Bulletin de l'AFIA*, 7, november.
- Kahn, G., Nowlan, S. and McDermott, D., 1985. MORE : an intelligent knowledge acquisition tool. Proc. 9th Joint Conference on Artificial Intelligence, Los Angeles, CA.
- Kolski, C. and Duribreux, M., 1992. Towards cognitive engineering workbenches considering time for the "intelligent" design of operator assistance tools. In: S. Kumar (Ed.), *Advances in Industrial Ergonomics and Safety IV*, Taylor & Francis, London, pp. 1063-1070.

- Kolski, C., Tendjaoui, M. and Millot, P. 92. A process method for the design of "intelligent" man-machine interfaces : case study : the Decisional Module of Imagery. *International Journal of Human Factors in Manufacturing*, vol. 2 (2), pp. 155-175.
- Lees, F.P., 1983. Process Computer Alarm and Disturbance Analysis : outline of methods for systematic synthesis of the fault propagation structure. *Computers and Chemical Engineering*, vol. 8, pp. 91-103.
- Libert, G., Dergal, A. and Millot, P., 1990. Modèles de raisonnement temporel en I.A. Proc. Convention IA, Paris, January.
- Mandiau, R., Kolski, C., Millot, P. and Chaib-Draa, B., 1991. A new approach for the cooperation between human(s) and assistance system(s) : a system based on intentional states. Proc. World Congress on Expert Systems, Orlando, Florida, Dec. 16-19.
- McDermott, D., 1982. A temporal logic for reasoning processes and plans. *Cognitive science*, 6, pp. 101-155.
- Millot, P., 1988. *Supervision des procédés automatisés et ergonomie*. Editions Hermès, Paris.
- Moray, N., 1986. Monitoring behaviour and supervisory control. In: K. Boff, L. Kaufmann and J.P. Thomas, *Handbook of Perception and Human Performance*, Wiley, New-York.
- Nassiet, D., 1987. Contribution à la méthodologie de développement des systèmes experts : application au domaine du diagnostique technique. Thèse de docteur ingénieur, University of Valenciennes, France.
- Paterson, A., Sachs, P. and Turner, M., 1985. Escort : the application of causal knowledge to real-time process control. Proc. Expert systems '85, Cambridge University Press.
- Piaget, J., 1946. *Le développement de la notion de temps chez l'enfant*. Presses Universitaires de France, Paris.
- Rasmussen, J., 1980. The human as a system component. In: Smith H.T. and Green T.R.G. (eds.), *Human Interaction with Computer*, London Academic Press.
- Rasmussen, J., 1986. *Information processing and Human-Machine Interaction, an approach to cognitive engineering*. North Holland, Amsterdam.
- Rouse, S.H., Rouse, W.B. and Hammer, J.M., 1982. Design and evaluation of an on-board computer based in formation system for aircraft, *IEEE System, Man and Cybernetics*, 12(4).
- Taborin, V., 1989. *Cooperation entre Opérateur et Système d'Aide à la Décision pour la Conduite de Procédés Continus: Application à l'Interface Opérateur Système Expert du Projet ALLIANCE*. Ph.D. Thesis, University of Valenciennes, France.
- Tang, X. and Schoellkopf, J.C., 1990. Un générateur de systèmes experts de sconde génération pour la supervision des procédés continus. Proc. USINICA-90, Palais des congrès, Paris, June.
- Tendjaoui, M., Kolski, C. and Millot, P., 1991. An approach towards the design of intelligent man-machine interfaces used in process control. *International Journal of Industrial Ergonomics*, 8, pp. 345-361.
- Vogel, C., 1988. *Génie cognitif*. Masson, Paris.